



① Front Elevation Lots 2 and 4
 Scale: $\frac{1}{8}'' = 1'-0''$

4
 Sheet Number:

Project: 08044
 Description: Design Development
 Date: October 06, 2010

Edgewater Manor Flat - 6
 Kacin Companies

© 2010 Shapiro & Company Architects, Inc.
 Designs, drawings, and illustrations, contained herein, are protected as an architectural work under section 102 of the Copyright act, 17 U.S.C., as amended on December 1, 1990. Design, drawings, and illustrations may not be reused, copied, or redrawn for any purpose without the written permission of Shapiro & Company Architects, Inc.

Shapiro & Company
 architects, inc.
 Memphis Office: 4646 Poplar Ave., Suite 517
 Memphis, TN 38117
 Ph: 901.685.9001
 www.shapiroandco.com
 Nashville Office: 218 N. Third Ave.
 Nashville, TN 37201
 Ph: 615.686.7274
 Fax: 901.685.9054



1 Front Elevation Lot 3

Scale: $\frac{1}{8}$ " = 1'-0"

3

Sheet Number:

Project: 08044
Description: Design Development

Date: October 06, 2010

Edgewater Manor Flat - 6
Kacin Companies

© 2010 Shapiro & Company Architects, Inc.
Designs, drawings, and illustrations, contained herein, are protected as an architectural work under section 102 of the Copyright act, 17 U.S.C., as amended on December 1, 1990. Design, drawings, and illustrations may not be reused, copied, or redrawn for any purpose without the written permission of Shapiro & Company Architects, Inc.

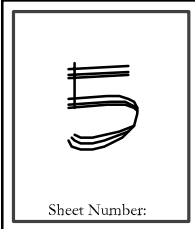
Shapiro & Company
architects, inc.

Memphis Office:
4646 Poplar Ave., Suite 517
Memphis, TN 38117
Ph: 901.685.9001
www.shapiroandco.com

Nashville Office:
218 N. Third Ave.
Nashville, TN 37201
Ph: 615.686.7274
Fax: 901.685.9054



① **Left Side Elevation Lot 3**
 Scale: $\frac{1}{8}'' = 1'-0''$ Left Side Elevation for Lots 2 and 4 is similar.



Project: 08044
 Description: Design Development
 Date: October 06, 2010

Edgewater Manor Flat - 6

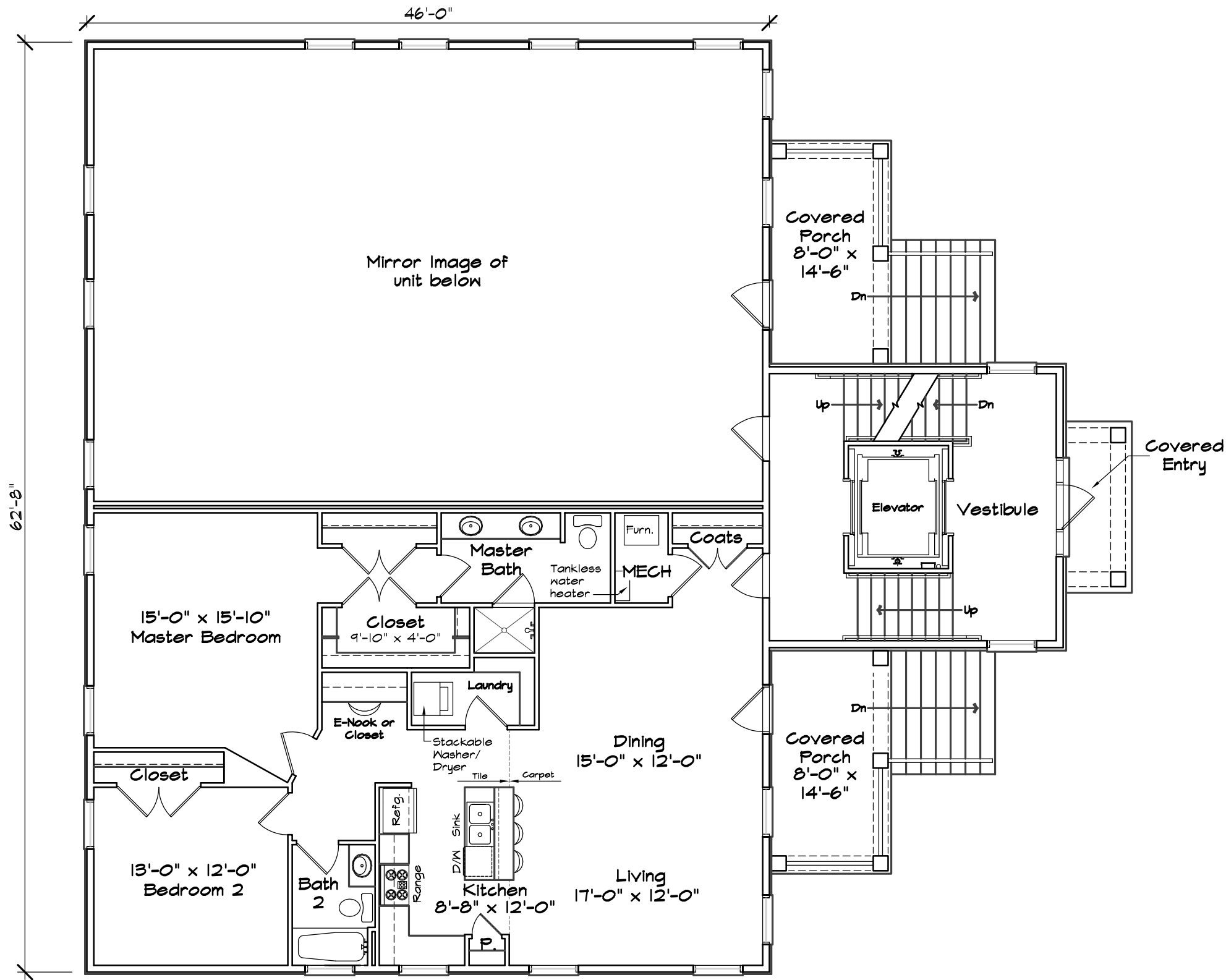
Kacin Companies

© 2010 Shapiro & Company Architects, Inc. Designs, drawings, and illustrations, contained herein, are protected as an architectural work under section 102 of the Copyright act, 17 U.S.C., as amended on December 1, 1990. Design, drawings, and illustrations may not be reused, copied, or redrawn for any purpose without the written permission of Shapiro & Company Architects, Inc.

Shapiro & Company
 architects, inc.


Memphis Office: 4646 Poplar Ave., Suite 517
 Memphis, TN 38117
 Ph: 901.685.9001
 www.shapiroandco.com

Nashville Office: 218 N. Third Ave.
 Nashville, TN 37201
 Ph: 615.686.7274
 Fax: 901.685.9054



1 First Floor Plan
 Scale: 1/8" = 1'-0" Second & third floor are similar

Condition space per unit: 1441 SQFT

	Project: 08044	Description: Design Development
	Date: October 06, 2010	

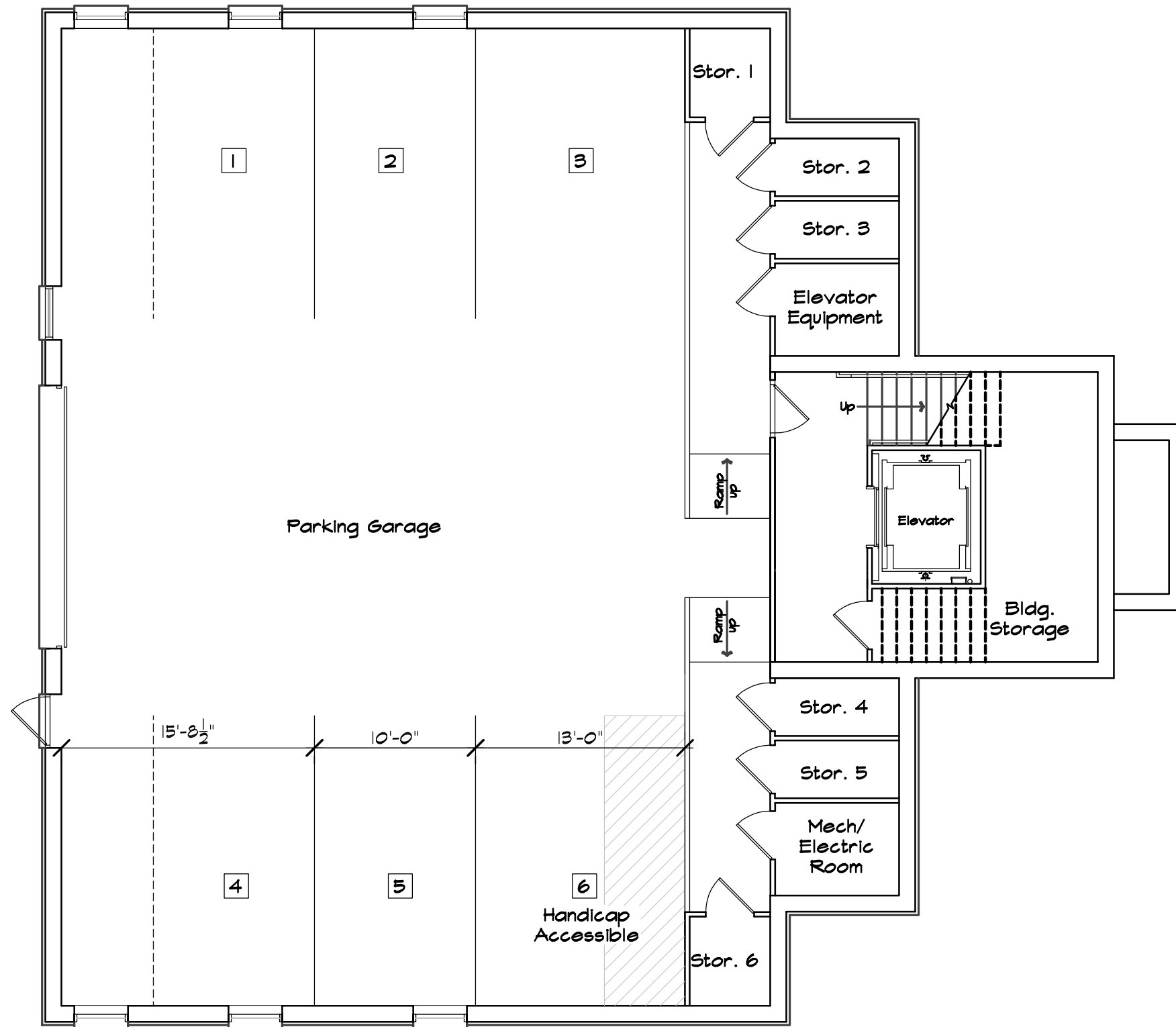
Edgewater Manor Flat - 6

Kacin Companies

© 2010 Shapiro & Company Architects, Inc. Designs, drawings, and illustrations, contained herein, are protected as an architectural work under section 102 of the Copyright act, 17 U.S.C., as amended on December 1, 1990. Design, drawings, and illustrations may not be reused, copied, or redrawn for any purpose without the written permission of Shapiro & Company Architects, Inc.

Shapiro & Company
 architects, inc.

Memphis Office: 4646 Poplar Ave., Suite 517 Memphis, TN 38117 Ph: 901.685.9001 www.shapiroandco.com	Nashville Office: 218 N. Third Ave. Nashville, TN 37201 Ph: 615.686.7274 Fax: 901.685.9054
---	--



1 Garage Floor Plan

Scale: 1/8" = 1'-0"

	Project:	Description:
	08044	Design Development
Date:	October 06, 2010	
Sheet Number:		

Edgewater Manor Flat - 6

Kacin Companies

© 2010 Shapiro & Company Architects, Inc.
 Designs, drawings, and illustrations, contained herein, are protected as an architectural work under section 102 of the Copyright act, 17 U.S.C., as amended on December 1, 1990. Design, drawings, and illustrations may not be reused, copied, or redrawn for any purpose without the written permission of Shapiro & Company Architects, Inc.

Shapiro & Company
 architects, inc.

Memphis Office: 4646 Poplar Ave., Suite 517
 Memphis, TN 38117
 Ph: 901.685.9001
 www.shapiroandco.com

Nashville Office: 218 N. Third Ave.
 Nashville, TN 37201
 Ph: 615.686.7274
 Fax: 901.685.9054