



1 Front Elevation "A"
 Scale: $\frac{1}{8}$ " = 1'-0"



2 Front Elevation "B"
 Scale: $\frac{1}{8}$ " = 1'-0"

Cottage Home C

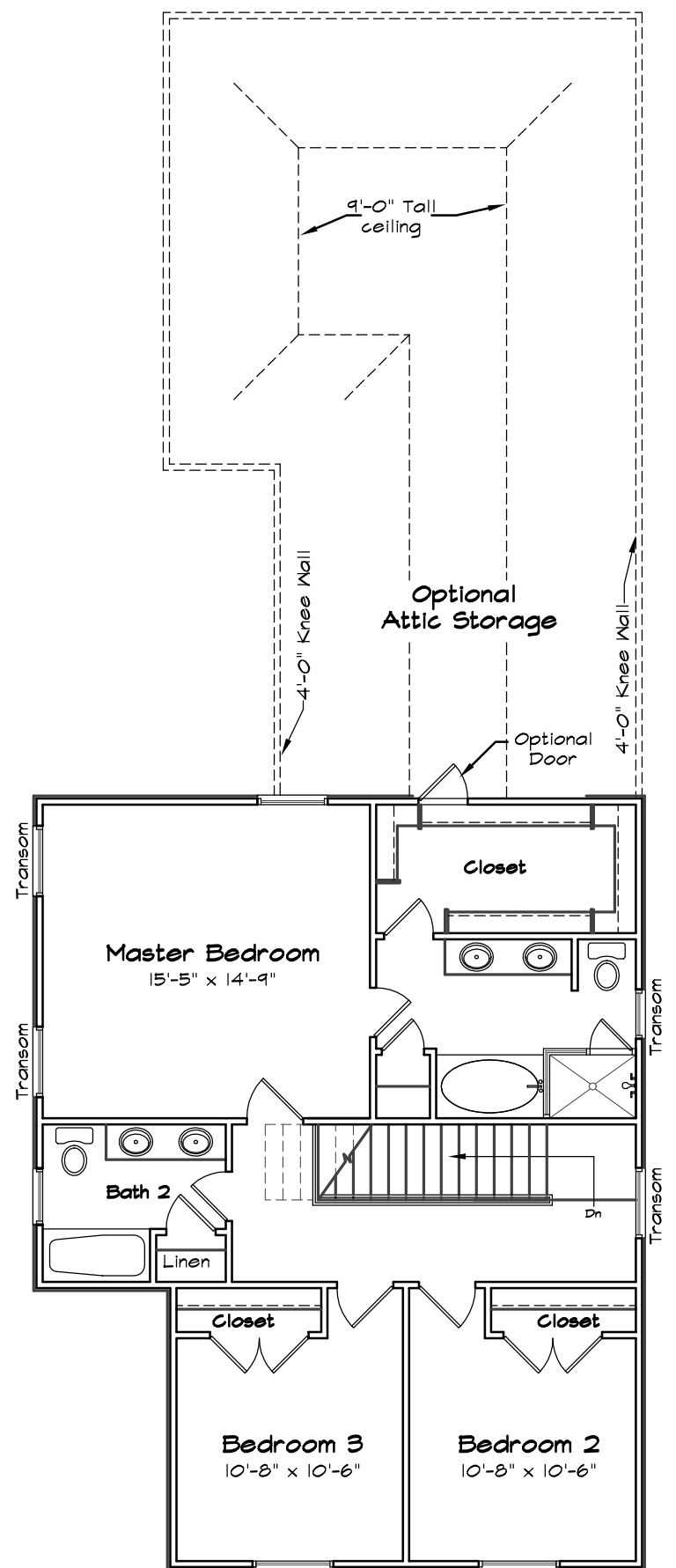
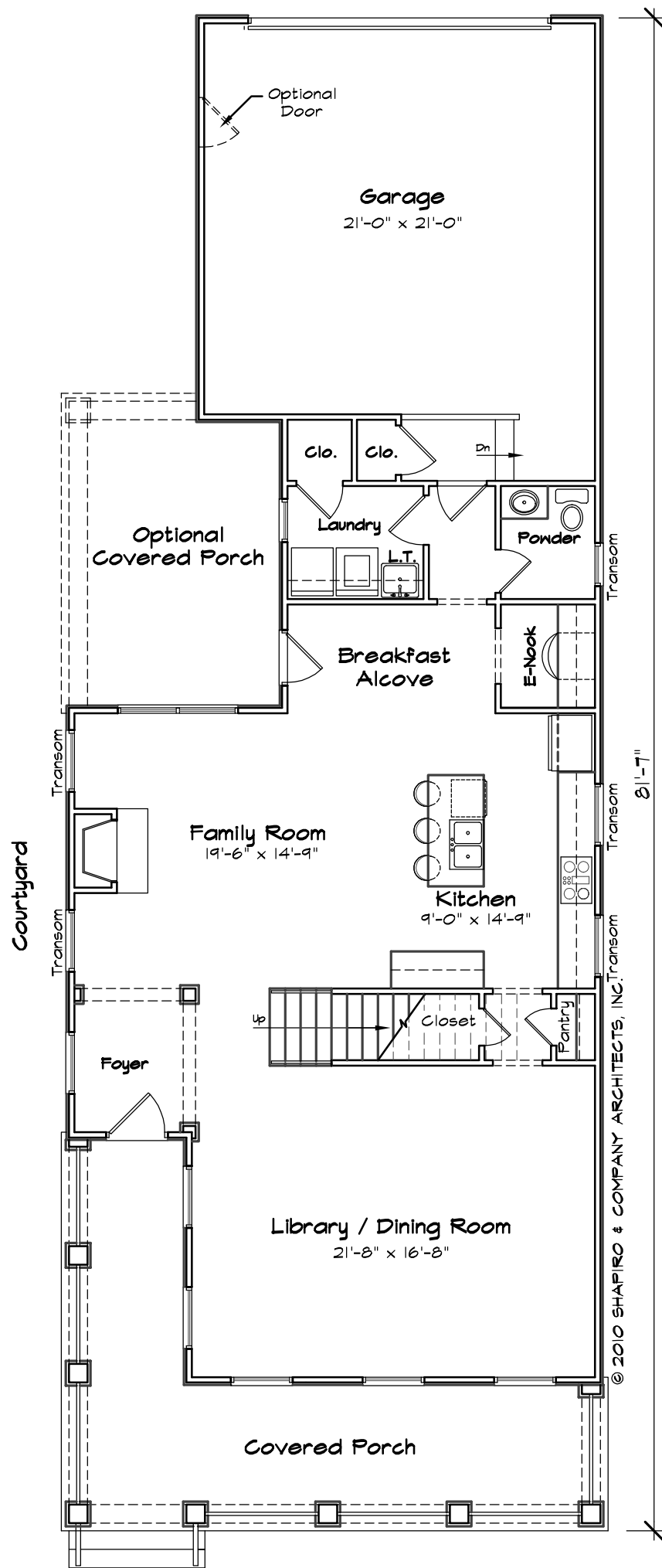
2
 Sheet Number:

Project: 08044
 Description: Schematic Design
 Date: October 06, 2010

Edgewater
 Kacin Companies

© 2010 Shapiro & Company Architects, Inc. Designs, drawings, and illustrations, contained herein, are protected as an architectural work under section 102 of the Copyright act, 17 U.S.C., as amended on December 1, 1990. Design, drawings, and illustrations may not be reused, copied, or redrawn for any purpose without the written permission of Shapiro & Company Architects, Inc.

Shapiro & Company
 architects, inc.
 Memphis Office: 4646 Poplar Ave., Suite 517
 Memphis, TN 38117
 Ph: 901.685.9001
 www.shapiroandco.com
 Nashville Office: 218 N. Third Ave.
 Nashville, TN 37201
 Ph: 615.686.7274
 Fax: 901.685.9054



1 First Floor Plan
Scale: $\frac{1}{8}'' = 1'-0''$

2 Second Floor Plan
Scale: $\frac{1}{8}'' = 1'-0''$

Lot Coverage	
NOTE:	The approved lot coverage is 40% of the lot area or 1,719 s.f. which ever is greater.
Coverage rule includes the house and garage footprint with veneer. Coverage does not include porches, steps, stoops, and decks.	

AREA CALCULATIONS	
FIRST FLOOR HEATED	1,189 s.f.
SECOND FLOOR HEATED	905 s.f.
TOTAL HEATED	2,094 s.f.
GARAGE	506 s.f.
OPTIONAL COVERED PORCHES	+ 178 s.f.
FIRST FLOOR HEATED AND GARAGE	1695 s.f.
NOTE: SQUARE FOOTAGES ARE NOTED FROM OUTSIDE FACE OF VENEER.	

Cottage Home C

Sheet Number:	Project: 08044	Description: Schematic Design
	Date: October 06, 2010	

Edgewater
 Kacin Companies

© 2010 Shapiro & Company Architects, Inc. Designs, drawings, and illustrations, contained herein, are protected as an architectural work under section 102 of the Copyright act, 17 U.S.C., as amended on December 1, 1990. Design, drawings, and illustrations may not be reused, copied, or redrawn for any purpose without the written permission of Shapiro & Company Architects, Inc.

Shapiro & Company
 architects, inc.

Memphis Office: 4646 Poplar Ave., Suite 517 Memphis, TN 38117 Ph: 901.685.9001 www.shapiroandco.com	Nashville Office: 218 N. Third Ave. Nashville, TN 37201 Ph: 615.686.7274 Fax: 901.685.9054
---	--